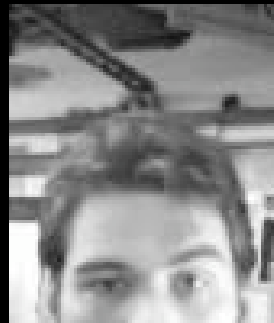

h2.o

Memory Augmentation

Deb Roy



Phil DeCamp



Brandon Roy



Jethran Guinness



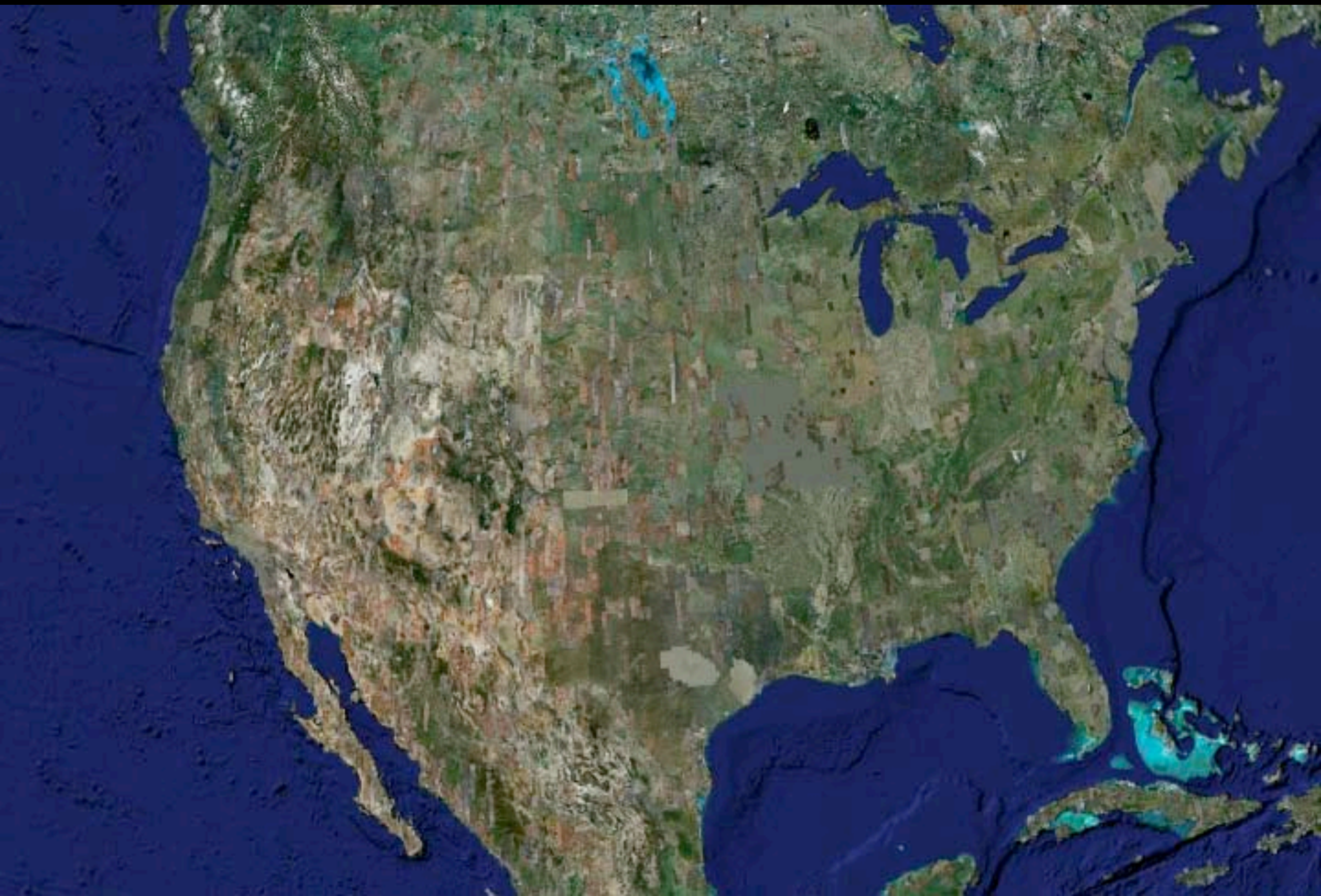
Rony Kubat

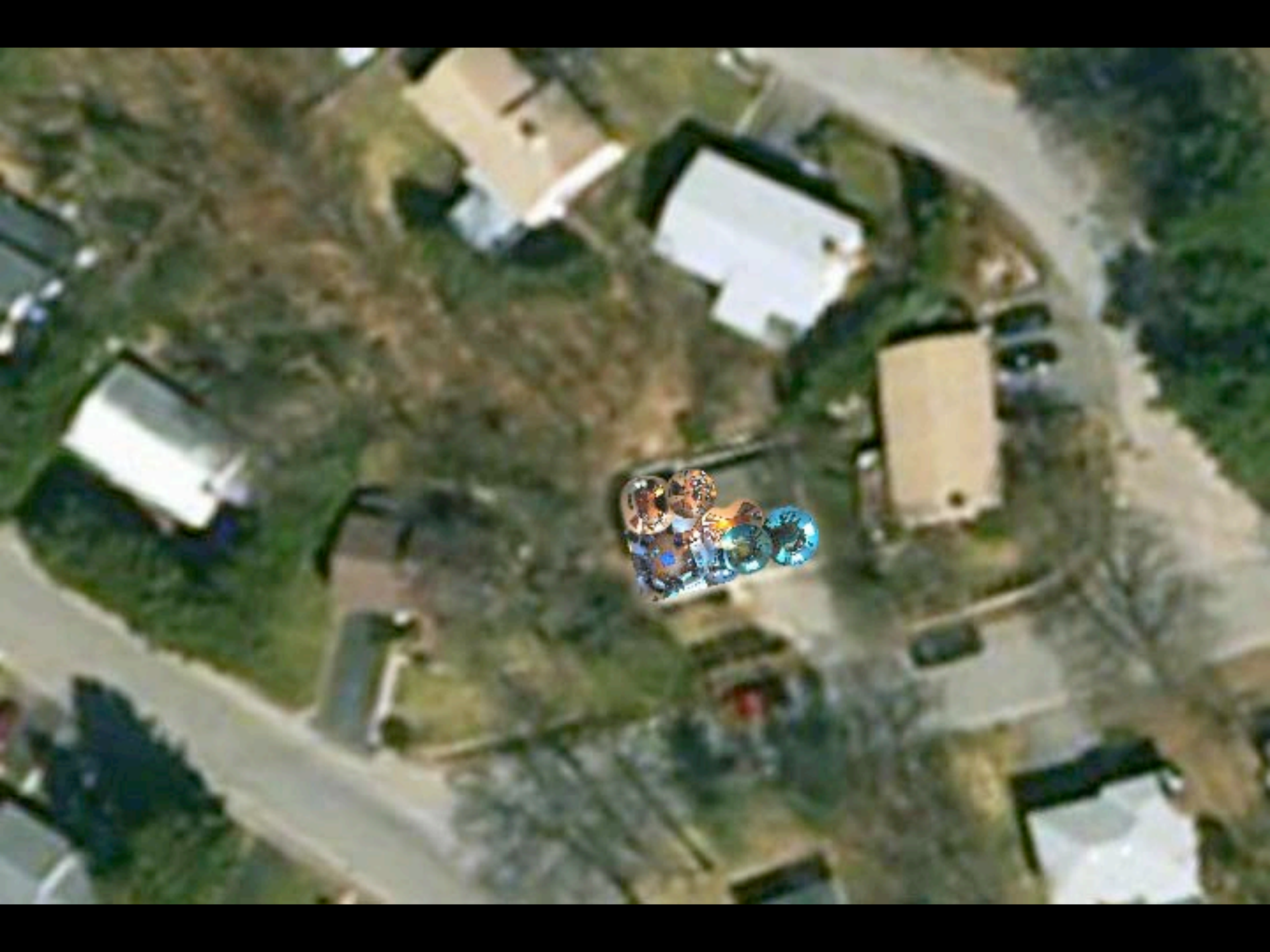


Alexia Salata



Prof. Rupal Patel















250,000 GB capacity

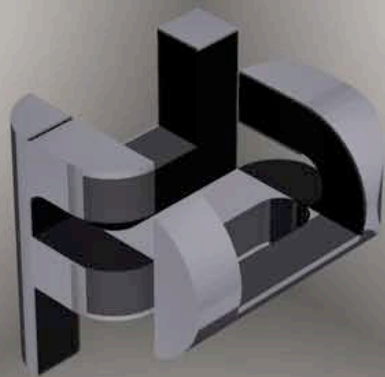
80,000 hrs video

120,000 hrs audio

HUMAN SPEECHOME PROJECT

H

P

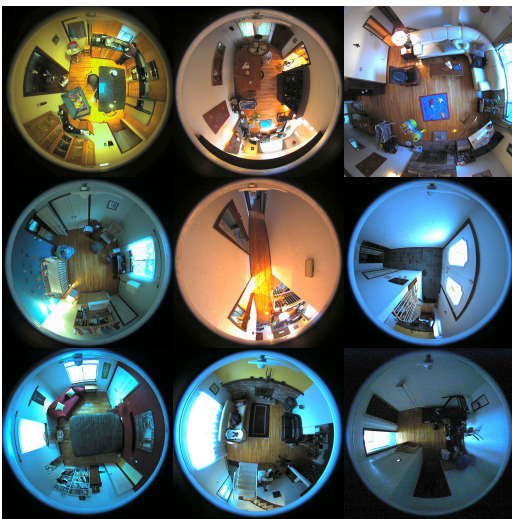


S

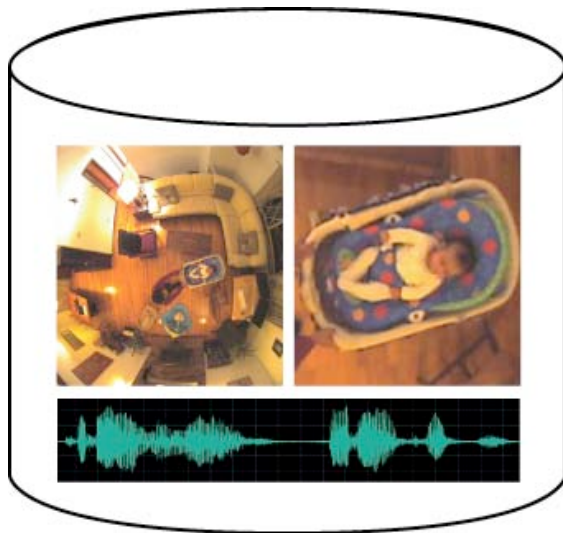




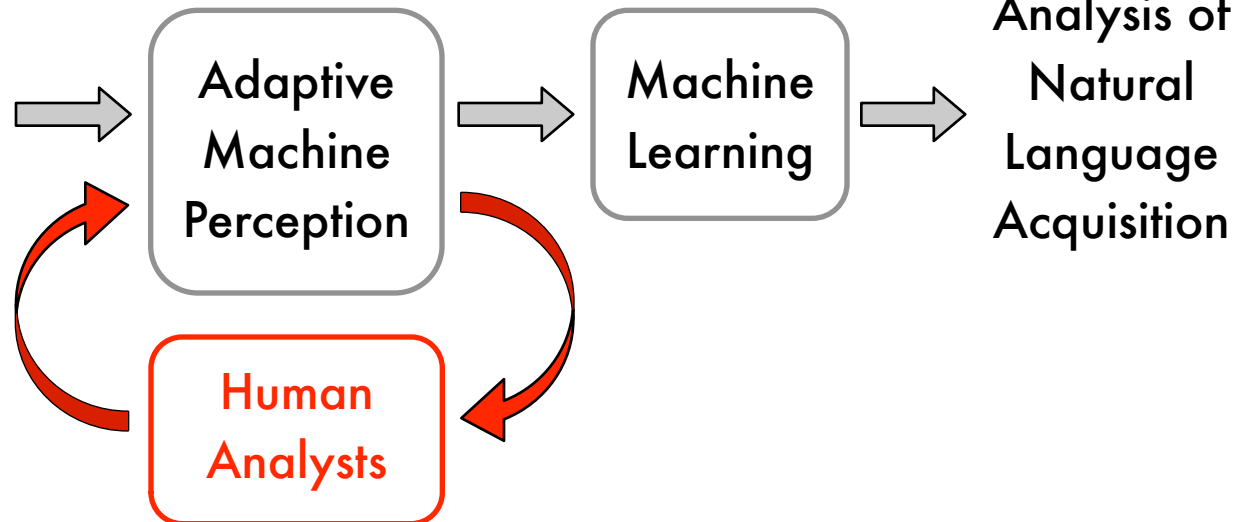
Understanding of Child Development via Ultradense Observation Analysis

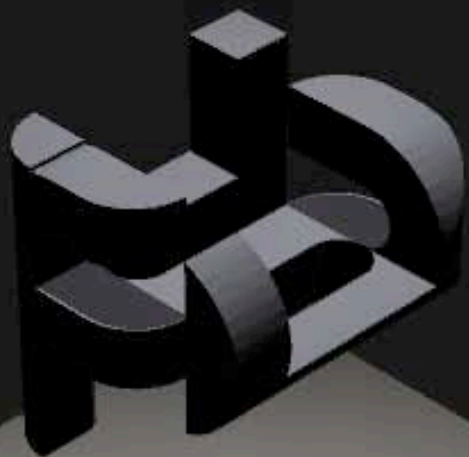


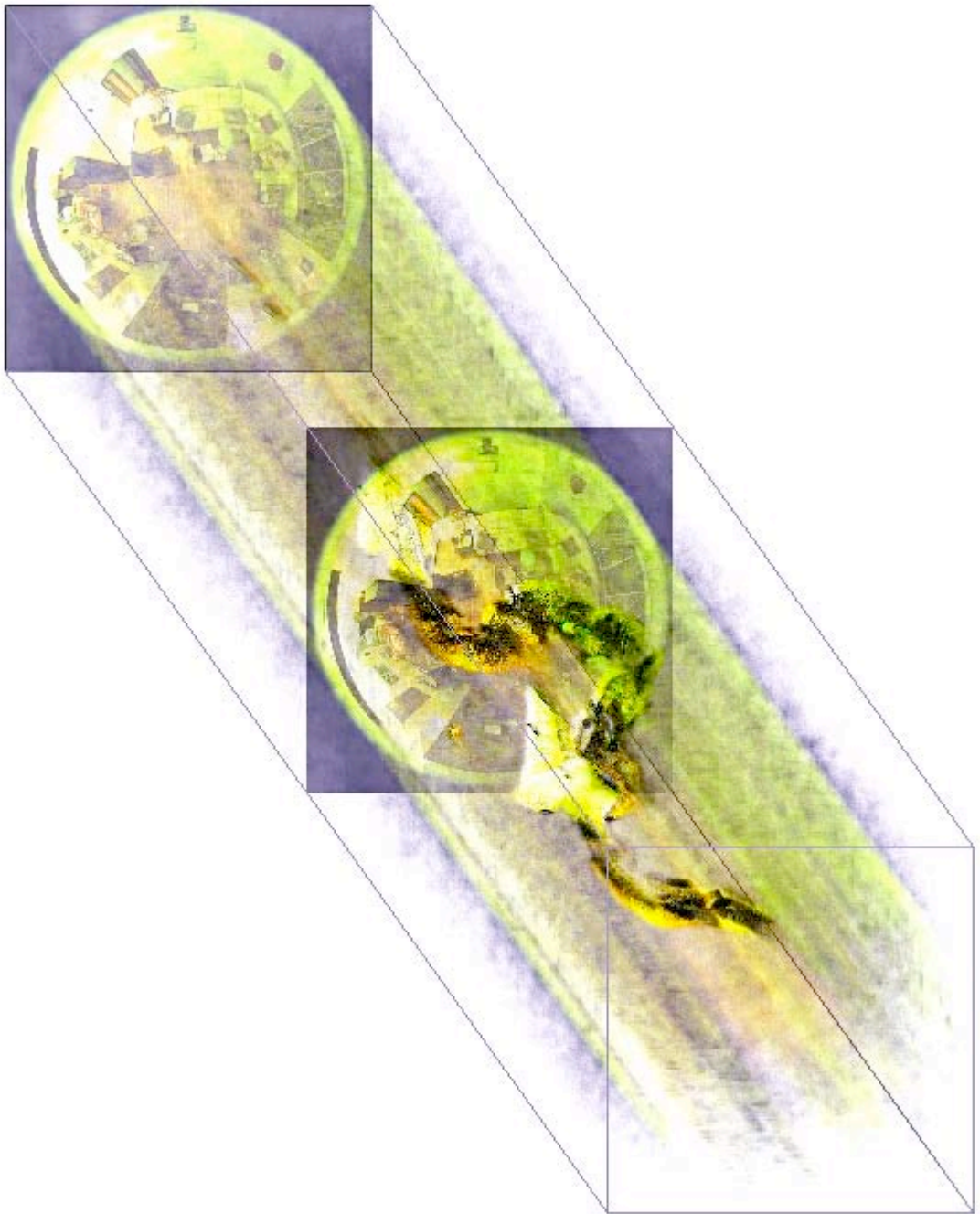
↓ 8-12 hours/day x 2-3 years



100,000's hours of audio-visual recordings







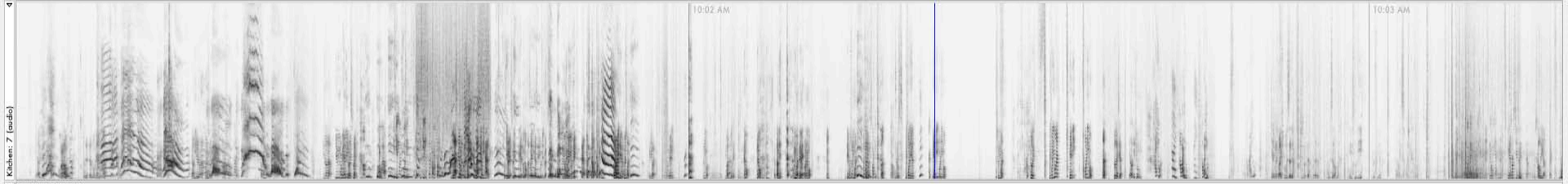
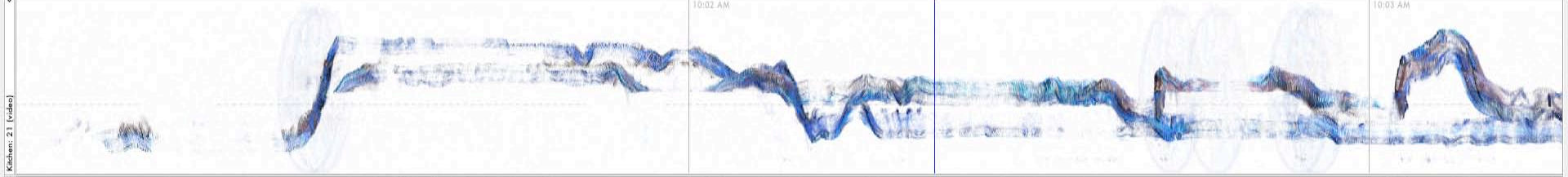


Hide all but selected Deselect all Distill Assignments Edit Annotators Run Nightly Process

- Globals: 1000 (I)
- Assignments: 1001 (metadata)
- BabyBed: 2 (audio)
- BabyBed: 22 (video)
- Bathroom: 25 (video)



- DiningRoom: 6 (audio)
- Entrance: 13 (audio)
- Entrance: 27 (video)
- Exercise: 12 (audio)
- Exercise: 29 (video)
- GuestBed: 24 (video)
- Hallway: 10 (audio)
- Hallway: 30 (video)



- LivingRoom: 3 (audio)
- MasterBed: 0 (audio)
- MasterBed: 20 (video)
- Office: 15 (audio)
- Playroom: 14 (audio)
- Playroom: 28 (video)
- Stairs: 1 (audio)
- Stairs: 4 (audio)
- Tone: 17 (audio)
- Tone: 5 (audio)
- Unused: 16 (audio)



Hide all but selected Deselect all Distill Assignments Edit Annotators Run Nightly Process



Tone: 17 (audio)
Tone: 5 (audio)
Unused: 16 (audio)



Hide all but selected Deselect all Distill Assignments Edit Annotators Run Nightly Process

Category	Start Date	End Date	Start Date	End Date	Start Date	End Date
Globals: 1000 (I)						
Assignments: 1001 (melodan)						
BabyBed: 1	Nov, 2006	Dec, 2006	Jan, 2007	Feb, 2007	Mar, 2007	
Bathroom: 25 (video)						
DiningRoom: 1	Nov, 2006	Dec, 2006	Jan, 2007	Feb, 2007	Mar, 2007	
Entrance: 4	Nov, 2006	Dec, 2006	Jan, 2007	Feb, 2007	Mar, 2007	
Exercise: 29 (video)	Nov, 2006	Dec, 2006	Jan, 2007	Feb, 2007	Mar, 2007	
GuestBed: 24 (video)						
Hallway: 4	Nov, 2006	Dec, 2006	Jan, 2007	Feb, 2007	Mar, 2007	
Kitchen: 3	Nov, 2006	Dec, 2006	Jan, 2007	Feb, 2007	Mar, 2007	
Kitchen: 3	Nov, 2006	Dec, 2006	Jan, 2007	Feb, 2007	Mar, 2007	
Laundry: 4	Nov, 2006	Dec, 2006	Jan, 2007	Feb, 2007	Mar, 2007	
LivingRoom: 1	Nov, 2006	Dec, 2006	Jan, 2007	Feb, 2007	Mar, 2007	
LivingRoom: 1	Nov, 2006	Dec, 2006	Jan, 2007	Feb, 2007	Mar, 2007	
MasterBed: 1	Nov, 2006	Dec, 2006	Jan, 2007	Feb, 2007	Mar, 2007	
MasterBed: 20 (video)						
Office: 1	Nov, 2006	Dec, 2006	Jan, 2007	Feb, 2007	Mar, 2007	
Playroom: 1	Nov, 2006	Dec, 2006	Jan, 2007	Feb, 2007	Mar, 2007	
Playroom: 1	Nov, 2006	Dec, 2006	Jan, 2007	Feb, 2007	Mar, 2007	
Stairs: 1	Nov, 2006	Dec, 2006	Jan, 2007	Feb, 2007	Mar, 2007	
Stairs: 4	Nov, 2006	Dec, 2006	Jan, 2007	Feb, 2007	Mar, 2007	

Tone: 17 (audio)
Tone: 5 (audio)
Unused: 16 (audio)





evolution of speech



(extra)ordinary moments





memory spotlights

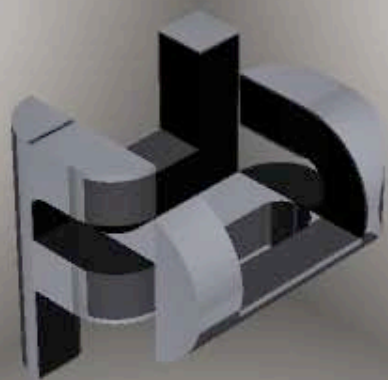


kitchen tango

HUMAN SPEECHOME PROJECT

H

P



S